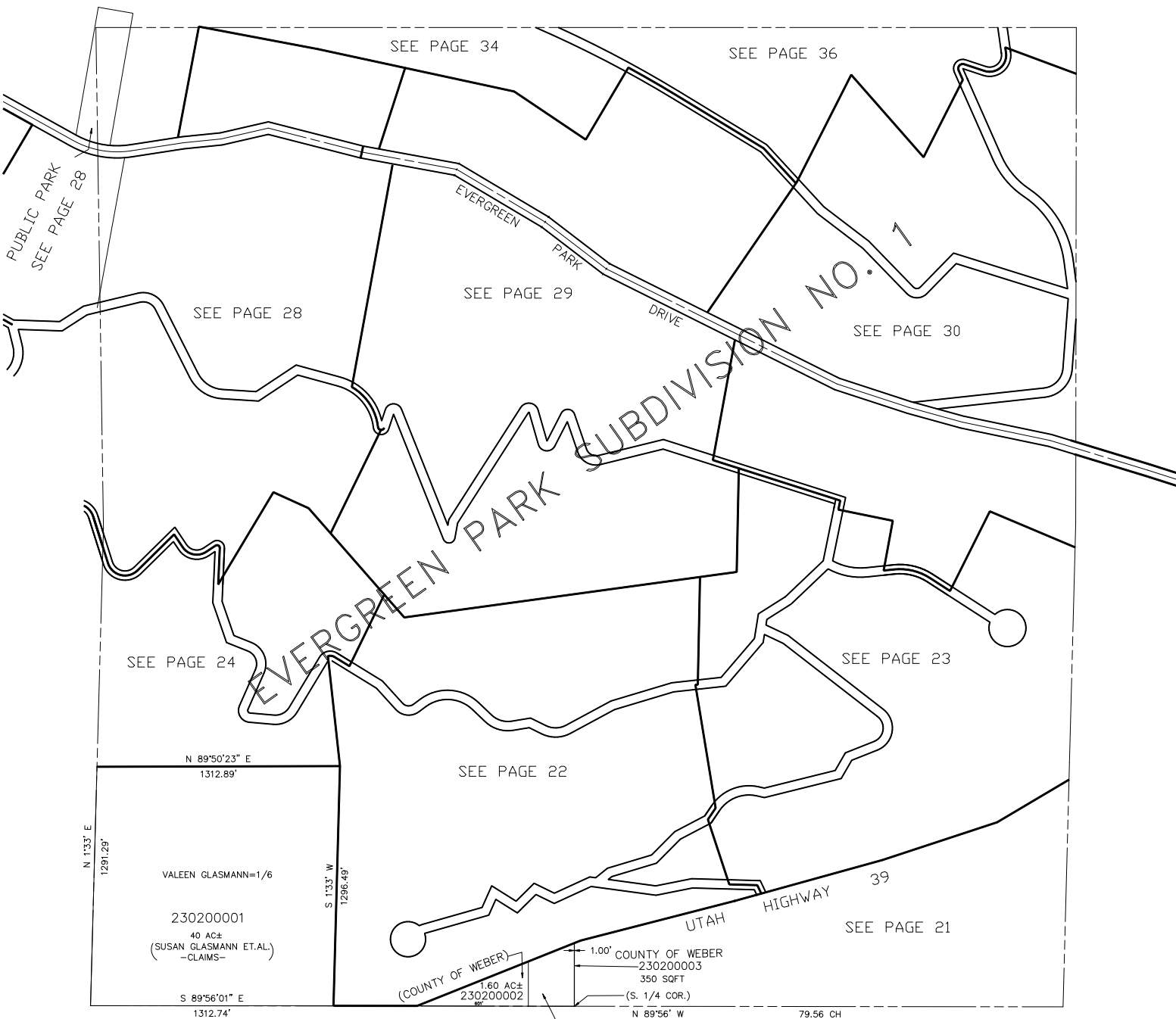


SECTION 32, T.7N., R.3E., S.L.B. & M.

IN WEBER COUNTY

SCALE 1" = 400'

TAXING UNIT: 58



NOTE: SEE GOV. LAND OFFICE  
 DEPENDENT RESURVEY. NOT OFFICIALLY  
 RECORDED IN THIS OFFICE, BUT FILED  
 IN PLAT BOOK 12, PAGE 18 (ORIGINALS)  
 FOR REFERENCE PURPOSES.